



Mimaki's Unique Core Technologies

ENSURE CONTINUOUS PRINTING OPERATION, COMBINED WITH SUPERIOR IMAGE QUALITY

FOR STABLE PRODUCTION AND SUPERIOR IMAGE QUALITY



NRS

Nozzle Recovery System substitutes defective nozzles, offering uninterrupted printing.



MAPS4

Mimaki Advanced Pass System reduces banding by dispersing ink drops between passes.



VARIABLE DOT

enables the printer to print in 3 different dot sizes to create high quality images with smooth gradations.



INTELLIGENT HEATERS

3-way intelligent heaters improve media and ink performance. Pre- and print-heaters optimise ink adhesion. Post-heaters accelerate drying.

www.mimakieurope.com twitter: @MimakiEurope
Mimaki Europe B.V. Stammerdijk 7E, 1112 AA Diemen, The Netherlands T: +31 (0)20 4627640

MIMAKI SWJ-320EA SPECIFICATIONS

SWJ-320EA		
Print Head	On-demand Piezo head (4 printheads with 2 staggered configuration)	
Print Resolution	300dpi, 450dpi, 600dpi, 900dpi, 1200dpi	
Maximum Print Width	3,200mm	
Ink	Type	CS100 solvent ink (C, M, Y, K) in 2L bottles
	Ink supply system	3L / each colour
Media	Width	Min. 210mm - Max. 3,250mm Twin roll setting: 1,524mm per roll Roll holder setting: 1,620mm
	Weight	Feeding: up to 100kg, Take-up: up to 100kg When using roll holders: up to 25kg
Drying device	3-way intelligent heater (pre/print/post)	
Safety standard	VCCI Class A / FCC-class A / ETL UL 60950-1 / CE Marking (EMC, Low voltage, Machinery Directive, RoHS) / CB Report / REACH / EAC	
Interface	Ethernet 1000BASE-T (Recommended) / USB2.0	
Power	AC200 - 240V, 50/60 Hz, 29A or less	
Power consumption	6.9kW or less	
Operational environment	Temperature	20 - 30°C
	Humidity	35 - 65%Rh (Non-condensing)
Dimensions (WxDxH)	5,410 x 995 x 1,440mm	
Weight	850kg	
Included	RIP (RasterLink6Plus), Media feeding / take-up device	

Specifications, designs and dimensions in this list may be subject to change without notice due to technical improvements, etc. • Composer's errors reserved

Supplies & Options

Item	Item code
Solvent ink CS100 (2L ink bottle)	CS100-x-BB-1
Small take-up unit (for twin-roll printing)	OPT-J0394
Take-up roll holder unit	OPT-J0409
3.2m roll shaft unit	OPT-J0410
BOFA™ Air Purifier Unit	K-SWJ320EA-BOFA

MEUSWJEA01-EN

For detailed specifications, options and supply list, please visit www.mimakieurope.com



DESIGNED FOR QUALITY AT THE BEST PRICE

COMPETITIVE SUPER-WIDE FORMAT SOLVENT PRINTER

SWJ-320EA



Built to Mimaki's highest technology standards, the SWJ-320EA offers an unmatched ratio of superior print quality, fast printing speed and reliability - all at a very accessible price. As a revolutionary 3.2m-wide solvent printer, the SWJ-320EA will help you diversify your business in the most profitable way. Suitable for producing a variety of large-format outdoor and indoor applications—from banners to POS displays.

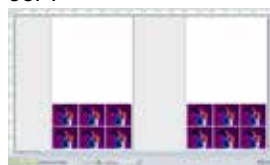
HIGH PRODUCTIVITY

Twin-roll printing* doubles productivity and shortens delivery time of small width print jobs. Two media rolls can be used for simultaneous printing of two independent print jobs. The print width for each roll can be set separately and handling different jobs at the same time is easy with the bundled RIP software: RasterLink6Plus.

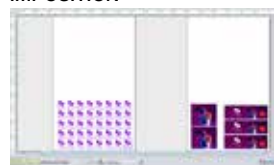


*The option "Small take-up unit (OPT-J0394)" is required to enable twin-roll printing.

COPY



IMPOSITION



TILING



Print Speeds

		0	20	40	60	80	100	120	140
Super Draft	300x600 2P Bi	137m ² /h							
Draft 1	450x600 2P Bi	97							
Draft 2	300x600 4P Bi	74							
High Speed	300x900 6P Bi	47							
Production	600x600 8P Bi	35							
Quality	600x900 12P Bi	24							
High Quality	900x1200 16P Bi	13							

UNMATCHABLE RUNNING COSTS

Affordable solvent ink "CS100"

Not only is our CS100 ink (available in 2L bottles) more affordable than conventional ink cartridges, it also has exceptional stability and low propensity to clog nozzles.

The CS100 ink also brings the same Mimaki standards for colour accuracy, image durability and weatherability found in other conventional Mimaki solvent inks. In combination with the low investment cost of the SWJ-320EA, our competitive ink price will provide you the lowest sqm cost in the market!



OPTIONAL AIR PURIFIER UNIT

Designed exclusively by BOFA for the Mimaki SWJ-320EA

The BOFA Air Purifier Unit is a dual fume extraction system manifold that can effectively capture and remove VOCs (Volatile Organic Compounds), ensuring a cleaner and more pleasant working environment.

Featuring a clean and seamless design, this option is affixed directly to the front of the printer, filtering the fumes through a dual stage filtration process and returning the clean air back to the working environment.

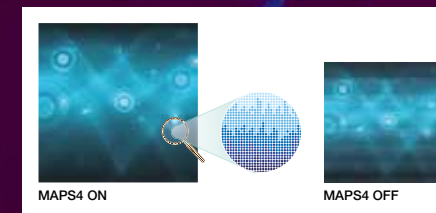
The BOFA Air Purifier Unit reduces any unpleasant odour to an absolute minimum and features user replaceable HEPA/gas filters. Installing the unit can also be done easily by the operator.



MIMAKI CORE TECHNOLOGIES AT A COMPETITIVE PRICE

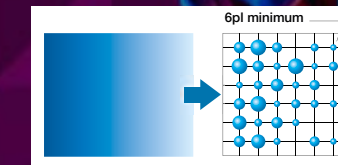
Mimaki Advanced Pass System (MAPS4)

Mimaki Advanced Pass System (MAPS) utilises an advanced algorithm pattern to reduce banding and uneven colour, ensuring high print quality even at higher speeds.



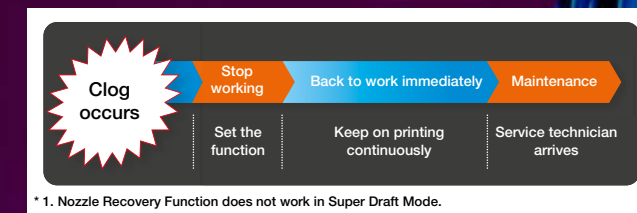
Variable Dot

Mimaki's world proven technology produces unbeatable high definition and resolution prints. With three different dot sizes (6pl, 15pl, 21pl) and a maximum resolution of 900x1200dpi, the SWJ-320EA ensures fantastic print results without a grainy appearance.



Nozzle Recovery System (NRS)

In the unlikely event of a nozzle dropping out during a long print run, the NRS can be activated by the operator to allow the printer to continue printing in excellent quality until maintenance is performed.



* 1. Nozzle Recovery Function does not work in Super Draft Mode.